



alliancepastex 

PROVIDING SUSTAINABLE SOLUTIONS FOR A BETTER TOMORROW

Alliance Pastex
5034 Spencer Highway
Pasadena, TX 77505
tel: 281.991.6700
fax: 281.991.6694
sales@alliancepastex.com
www.alliancepastex.com

Avangard Innovative
11906 Brittmoore Park Drive
Houston, TX 77041
tel: 281.582.0700
fax: 281.582.0799
sales@avaicg.com
www.avaicg.com

alliancepastex 

www.alliancepastex.com

PROVIDING
SUSTAINABLE
SOLUTIONS
FOR A BETTER
TOMORROW



Thank you for your interest in Alliance Pastex, an Avangard Innovative company. We are very proud of the strong customer relationships we have built and the comprehensive recycling services that we are able to provide to our clientele.

Our goal is to provide comprehensive "one-stop" solutions that cover all of our customers' environmental and industrial service needs. Our safety record is impeccable; we have had no recordable incidents in our company since its inception. Our equipment is state-of-the-art and we continue to add newer technologies every year. We have custom units made specifically with safety and ease of operation in mind.

Thank you again for this opportunity to introduce Alliance Pastex. If we can be of assistance to you in any way, please contact us, and we will respond quickly to your needs.

Sincerely,

Chris Lendo
President



THE ALLIANCE PASTEX DIFFERENCE

Alliance Pastex is a full service recycling and environmental company providing comprehensive global services. Our recycling division specializes in a variety of industries in the assessment of waste management and the processing of scrap plastics to create the highest value raw materials.

With the extensive core services offered by our parent company, Avangard Innovative, and their stature as one of the largest recyclers in North America, Alliance Pastex is positioned as one of the top industrial recycling services companies in the United States.

Avangard Innovative Core Services:

- ▶ Recycling Solutions
- ▶ Processing / Recycling Facilities
- ▶ Equipment Solutions
- ▶ Environmental Services
- ▶ Industrial Services
- ▶ Resin Distribution
- ▶ Sustainable Products

Alliance Pastex Core Services:

- ▶ Vacuum Trucks
- ▶ Roll-off Services
- ▶ Specialty Resin Packaging and Transfers
- ▶ Van Trailer Trucking
- ▶ Load Sampling/Quality Control
- ▶ Remediation
- ▶ Track Work
- ▶ Derailment Response

At Alliance Pastex we recognize that meeting the needs of our clients involves more than just providing a technically effective solution. It also means providing that solution safely and economically. Over the years we have developed innovative technologies, management methods, contracting options and equipment to ensure the highest level of client satisfaction in onsite safety and in project costs.

We own the equipment and employ the personnel to service our customers, which enables us to provide timely and accurate services. The Alliance Pastex team is comprised of uniquely qualified technical specialists whose wide-ranging experience allows them to reduce recycling risks and costs while solving the most intractable problems. All of our employees are familiar with the unique needs of polymer producing customers.

We understand that each company has unique and specific needs that can't be satisfied with a "cookie cutter" approach. With an exceptionally wide range of skills and disciplines in recycling and environmental services, we aim to look after the whole-life needs of our clients by providing creative solutions that reflect prevailing best practice standards. That's why we offer flexible solutions for recycling and environmental management. We'll work with you to assess your individual needs and design a tailored program.



ALLIANCE PASTEX SOLUTIONS

PLASTICS

Alliance Pastex provides an array of services for plastic manufacturing facilities and chemical plants. What distinguishes us from our competition is our unique "in-plant" turn-key plastics program. We provide all services necessary for the clean-up, removal, transportation and processing of all scrap and off-grade materials. We offer all of these services in-house. This is a tremendous benefit to our customers.



We schedule all of the required services internally with just one call for service from the chemical plant facility. We are always ready to respond from our strategically located facility on the Houston ship channel.

Through our parent company, Avangard Innovative, we are able to provide a complete sustainability package that would include everything from recycling consultations and program implementation to post consumer recycling services, trading, distribution and more. At our corporate location in Houston, we have the ability to wash, blend, package (bulk and Gaylord), and ship our products to domestic and international destinations.

VACUUM SERVICES

Vacuum Trucks ("High Dump" and "High Rail" Air Machines)

Alliance Pastex has a fleet of vacuum trucks designed specifically with plastic in mind. The "high dump" units make quick work of spill cleanups by utilizing the option of dumping the materials directly into open top roll-off boxes. This eliminates the time it takes to stage vacuum boxes or drive to open top boxes that are located off the work site. The high-rail unit can clean up on-track spills without unnecessarily tying up other unrelated tracks in the process. This unit can drive on to the designated tracks while the others stay live, keeping your products moving.

Pneumatic Trailers

Alliance Pastex has a fleet of pneumatic trailers ranging in product capacity from 18,000 to 45,000 pounds. All of the units are self loaders, providing the ability to operate the trucks at remote locations and outside rail yards when the need arises. All of the units are steam cleaned after each product change and kept in clean condition to prevent product contamination. There are also small "pup" vacuum trailers available that are useful when negotiating tight areas inside small rail yards. These units are capable of transporting 18,000 lbs in each of the units and can be hauled in series as a double unit capable of transporting 36,000 lbs total material weight.



Salamander Transfer Unit

The Salamander has a positive displacement vacuum pump that generates maximum levels of 3,658 CFM of airflow at 16" Hg (200" water), providing the power needed to complete the most difficult cleanup or recovery operations. The Vector unit is capable of transferring all types of dry materials and is designed to package the products in super sacks, drums or Gaylord boxes. The Vector unit is powerful, boasting 3500 cfm of vacuum in a unit small enough to be pulled behind a 1-ton pickup truck.



Whether a job involves the removal of flowable bulk product or the recovery of environmentally sensitive materials, sludges, slurries or liquids, Alliance Pastex offers a complete line of vacuum equipment and options to meet your specific clean-up needs.

ALLIANCE PASTEX SOLUTIONS

ALLIANCE PASTEX SOLUTIONS

SPECIALTY SERVICES

Polymaster Direct Packaging Unit

Alliance Pastex specializes in ready sales packaging of railcar products for our customers. The Polymaster is the industry's leading on-the-run portable pneumatic conveying machine. This technology incorporates high speed bulk material conveying, without the risk of contamination. The Polymaster has the ability to transfer plastic pellets and resins at rates of up to 80,000 pounds per hour, and the capability to box 1,000 pounds of material per minute. Since the Polymaster is self-contained; polypropylene, polyethylene, PVC and PET are just a few of the types of products that can be conveyed. The Polymaster can also serve as a temporary backup system for shutdowns or system pluggage. We will package plastic pellets into Gaylord boxes, super saks, plastic crates, and many other types of containment.



Prime Material Transfers

Our Polymaster units are capable of transferring prime plastic from one railcar to another. These units can also remove plastic from railcars and load directly into pneumatic trailers or overseas containers. We have utilized these units to dry pellets that have gotten wet, blend two products together, improve production rates or replace in-plant loading systems during shutdowns, and they have even been used to screen and catch foreign objects in railcars such as a wrench or a bolt.

All of our units are exposed to only prime plastics. No colored or black pellets or flake are ever processed with these units. We maintain the highest level of quality control to insure that our customers' products are kept at their prime state at all times during processing.

Load Sampling and Delivery

Alliance Pastex crews are experienced in working with our customers' laboratories, bringing them samples of various products that need to be tested. We will send a crew of two men out in a transport vehicle to retrieve a sample from a railcar at an off-site location. These samples range in size from as small as 18 oz to as much as 2,000 – 3,000 lbs each. Once the samples have been gathered, they are delivered to a designated laboratory for analysis. Unlike our competitors, we provide on-call service 24/7.

Inspection / Quality Control

Our customers count on Alliance Pastex to help them insure that their products are of the highest quality and free from contamination. We have trained personnel on-site, assigned to inspect pneumatic trailers that are sent in to vacuum materials from railcars. Once the paperwork has been confirmed and each compartment on the trailer has been visually inspected, our knowledgeable personnel take the pneumatic truck drivers directly to the proper railcar and insure that all plant safety practices are followed. Once the trailer has been loaded, we process the properly completed papers and deliver to our customers for review.

Our on-site personnel remain very active in our customers' health and safety programs. We assist our customers with implementation and follow-up to processes and procedures regarding contractors. Alliance Pastex has helped to write many of the current in-house safety plans in use at our customers' sites today.



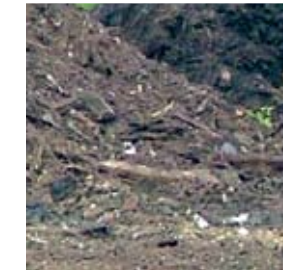
TRACK WORK

Alliance Pastex crews have performed numerous civil projects inside rail yards for our customers. We install concrete pads and raise rail tracks where they have sunken over years of heavy traffic. We have backhoes and skid steer loaders with cribbing attachments that perform removal of contamination from between the rail ties. Our crews are experienced in installing track pans and track pads that aid in eliminating environmental contamination of underlying soils due to leaking locomotives and railcars. Once the cleanup is completed, we install new ballast rock and bring it up to grade ready for inspection.

Alliance Pastex crews are specifically trained for servicing of rail related fueling stations. Our services include valve removal and replacement, hose repairs, gasket replacement and sight glass maintenance. If there are any environmental spills related to this faulty equipment, our remediation division can be quickly called to perform cleanup services.

Remediation

Our remediation crews specialize in the handling and processing of contaminated soils. We have the capability of removing materials and transporting them to a licensed facility for processing. We have used our excavators to remove and dispose of tires, ground up rail ties and even fugitive trash from illegal dumping activities.



After a derailment, our crews will mobilize and bring the contaminated and disturbed site back to its original grade and ready for service. All disposal or recycling of soils and products is handled in-house by trained and competent Alliance Pastex personnel.

Derailment Response

Alliance Pastex specializes in responding to commodities based train derailments. We provide 24 hour emergency service and have fully portable services to accommodate remote access needs. The first crew deployed will patch any leaks and attempt to reduce the loss of materials from any damaged railcars. We then utilize our equipment designed to vacuum the derailed materials and package them into various containers. Remediation crews will bring in heavy equipment to perform the final cleaning and restoration of the derailment site. All wastes from decontamination are handled in accordance with state and local laws and regulations.



ROLL-OFF SERVICES

Roll-Off Trucks

Alliance Pastex's roll-off fleet has tag axle units which are capable of transporting roll-off and vacuum boxes that are too heavy for the standard roll-off trucks to legally haul over the road. We own 20, 25, 30 and 40 cubic yard open top boxes and also 25 cubic yard dewatering boxes. This allows a fast, 24/7, response to customers' needs.



Roll-Off Boxes

We provide roll-off pans to be placed inside our customer's facilities for loading and temporary storage of polymers. We provide new roll-off boxes custom designed for our customers needs. In many cases, we provide boxes that are designed to reduce pellet loss, or increase production and safety. During our evaluation of our customer sites, we identify these special roll-off box needs.

VAN TRAILERS

The Alliance Pastex van trailer fleet consists of both 48' and 53' trailers to meet the specific needs of our customers. Our specialty is running timely routes between local warehouse facilities and our customer sites. We also have sleeper trucks and permits for hauling loads outside of our Houston based corporate headquarters. We routinely haul loads to destinations such as Dallas, Laredo and El Paso.

ENVIRONMENTAL SERVICES

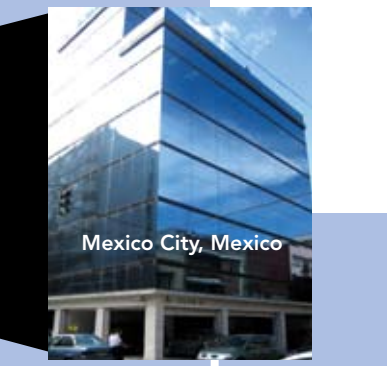
Alliance Pastex, in accordance with our parent company Avangard Innovative, is committed to finding and implementing cost-effective solutions for our customers' recycling needs and environmental waste management sector. We will implement these solutions while minimizing long-term liability exposure. Each environmental program is tailored to our customers' particular needs and is cohesive with company procedures and policies.

Environmental services include:

- ▶ Recycling and Recovery of Non-Conventional Materials
- ▶ Waste to Energy
- ▶ Re-use & Re-sale of Off-spec Chemicals
- ▶ Waste Management Services
- ▶ Permitted Waste Transportation
- ▶ Environmental Auditing
- ▶ On-site Services and Training



Together with our parent company, Avangard Innovative, Alliance Pastex has a global presence with the resources, knowledge and experience to provide the best recycling solutions around the world. We have more than 20 processing plants and 1500 employees worldwide which gives us the ability to purchase, market and process a wide variety of materials from virgin pellets to post consumer scrap. With each of our operations in diverse markets and industry-leading positions we are able to offer stability and consistency to our suppliers and customers.



HEADQUARTERS

- ▲ Houston, Texas

BRANCH OFFICES

- San Antonio, Texas
- Pasadena, Texas
- Lockport, New York
- Cleveland, Ohio
- Chihuahua, Chih. Mexico
- Hermosillo, Son. Mexico
- Mexico City, D.F. Mexico
- Guadalajara, Jal. Mexico
- Guatemala, Guatemala
- Buenos Aires, Argentina
- Santiago, Chile
- Panamá City, Panama

PLANTS

- Houston, Texas
- Monterrey, N.L. Mexico
- Cd. Juarez, Chih. Mexico
- Torreón, Coah. Mexico
- San Salvador, El Salvador
- Guatemala, Guatemala
- Tegucigalpa, Honduras
- San Pedro Sula, Honduras
- Managua, Nicaragua
- San José, Costa Rica
- Bogotá, Columbia

GLOBAL REACH

RECYCLING FOR THE WORLD



BRANCH OFFICES

- Hong Kong, China
- Ningbo, China

PLANTS

- Changzhou, China
- Zhongshan, China